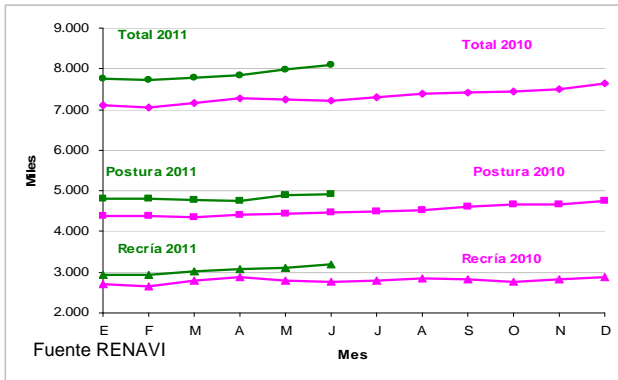
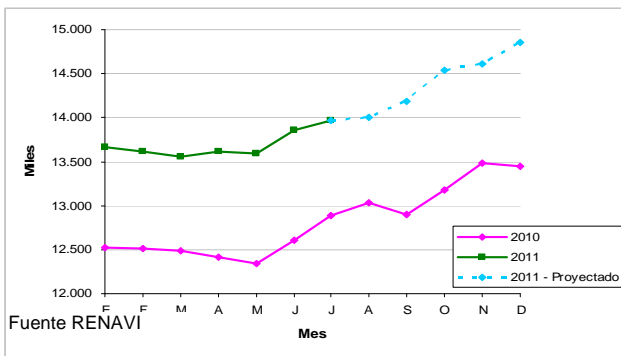


EXISTENCIAS DE REPRODUCTORAS PESADAS 2010 - 2011



| MES | RECRÍA (en miles) | | | POSTURA (en miles) | | | TOTAL (en miles) | | |
|-----|-------------------|-------|---------|--------------------|-------|---------|------------------|-------|---------|
| | 2010 | 2011 | % 11/10 | 2010 | 2011 | % 11/10 | 2010 | 2011 | % 11/10 |
| E | 2.697 | 2.935 | 8,8 | 4.393 | 4.809 | 9,5 | 7.090 | 7.744 | 9,2 |
| F | 2.652 | 2.941 | 10,9 | 4.382 | 4.796 | 9,4 | 7.034 | 7.737 | 10,0 |
| M | 2.801 | 3.011 | 7,5 | 4.347 | 4.767 | 9,7 | 7.148 | 7.778 | 8,8 |
| A | 2.871 | 3.086 | 7,5 | 4.409 | 4.743 | 7,6 | 7.280 | 7.829 | 7,5 |
| M | 2.801 | 3.099 | 10,6 | 4.446 | 4.880 | 9,8 | 7.248 | 7.979 | 10,1 |
| J | 2.761 | 3.190 | 15,5 | 4.466 | 4.911 | 10,0 | 7.227 | 8.101 | 12,1 |
| J | 2.802 | | | 4.499 | | | 7.301 | | |
| A | 2.855 | | | 4.522 | | | 7.378 | | |
| S | 2.813 | | | 4.602 | | | 7.415 | | |
| O | 2.769 | | | 4.668 | | | 7.437 | | |
| N | 2.817 | | | 4.675 | | | 7.492 | | |
| D | 2.875 | | | 4.761 | | | 7.637 | | |

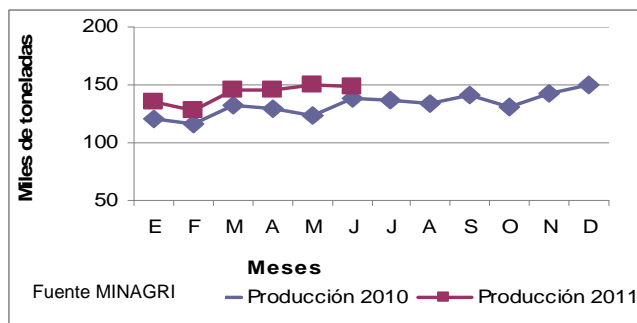
PRODUCCION DE POLLITOS BB PARRILLEROS 2010-2011
Miles/semana



| MES | BB (cant. promedio semanal en miles) | | |
|-----|--------------------------------------|--------|---------|
| | 2010 | 2011 | % 11/10 |
| E | 12.518 | 13.668 | 9,2 |
| F | 12.505 | 13.613 | 8,9 |
| M | 12.486 | 13.560 | 8,6 |
| A | 12.416 | 13.613 | 9,6 |
| M | 12.342 | 13.594 | 10,1 |
| J | 12.612 | 13.856 | 9,9 |
| J | 12.892 | 13.970 | 8,4 |
| A | 13.029 | 14.009 | 7,5 |
| S | 12.893 | 14.191 | 10,1 |
| O | 13.183 | 14.534 | 10,2 |
| N | 13.485 | 14.607 | 8,3 |
| D | 13.446 | 14.857 | 10,5 |

preliminar dic 2011

PRODUCCIÓN DE CARNE AVIAR



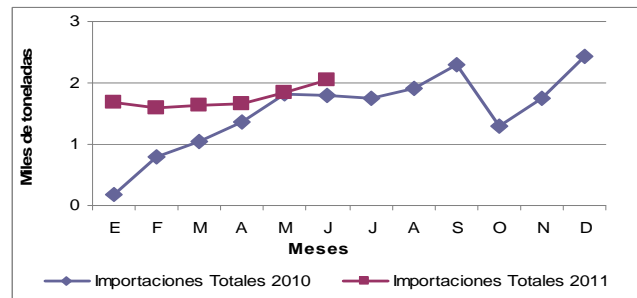
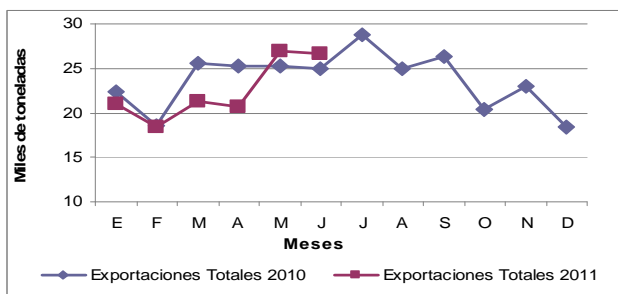
FAENA DE AVES

| AÑO MES | 2010 | 2011 | Dif 2011/10 |
|-----------------|------------------|---------|-------------|
| | miles de cabezas | | |
| E | 47.871 | 52.767 | 10 |
| F | 46.641 | 50.567 | 8 |
| M | 52.656 | 56.094 | 7 |
| A | 50.175 | 54.934 | 9 |
| M | 47.198 | 56.719 | 20 |
| J | 51.940 | 56.845 | 9 |
| J | 52.049 | | |
| A | 51.330 | | |
| S | 53.573 | | |
| O | 49.696 | | |
| N | 54.540 | | |
| D | 58.030 | | |
| Subt. Ene - Jun | 296.482 | 327.927 | 11 |
| Total | 615.699 | 327.927 | |

preliminar junio 2011

Fuente MINAGRI – con datos SENASA

EXPORTACIONES / IMPORTACIONES DE CARNE AVIAR Y SUBPRODUCTOS



Fuente MINAGRI con datos SENASA

Fuente MINAGRI con datos SENASA